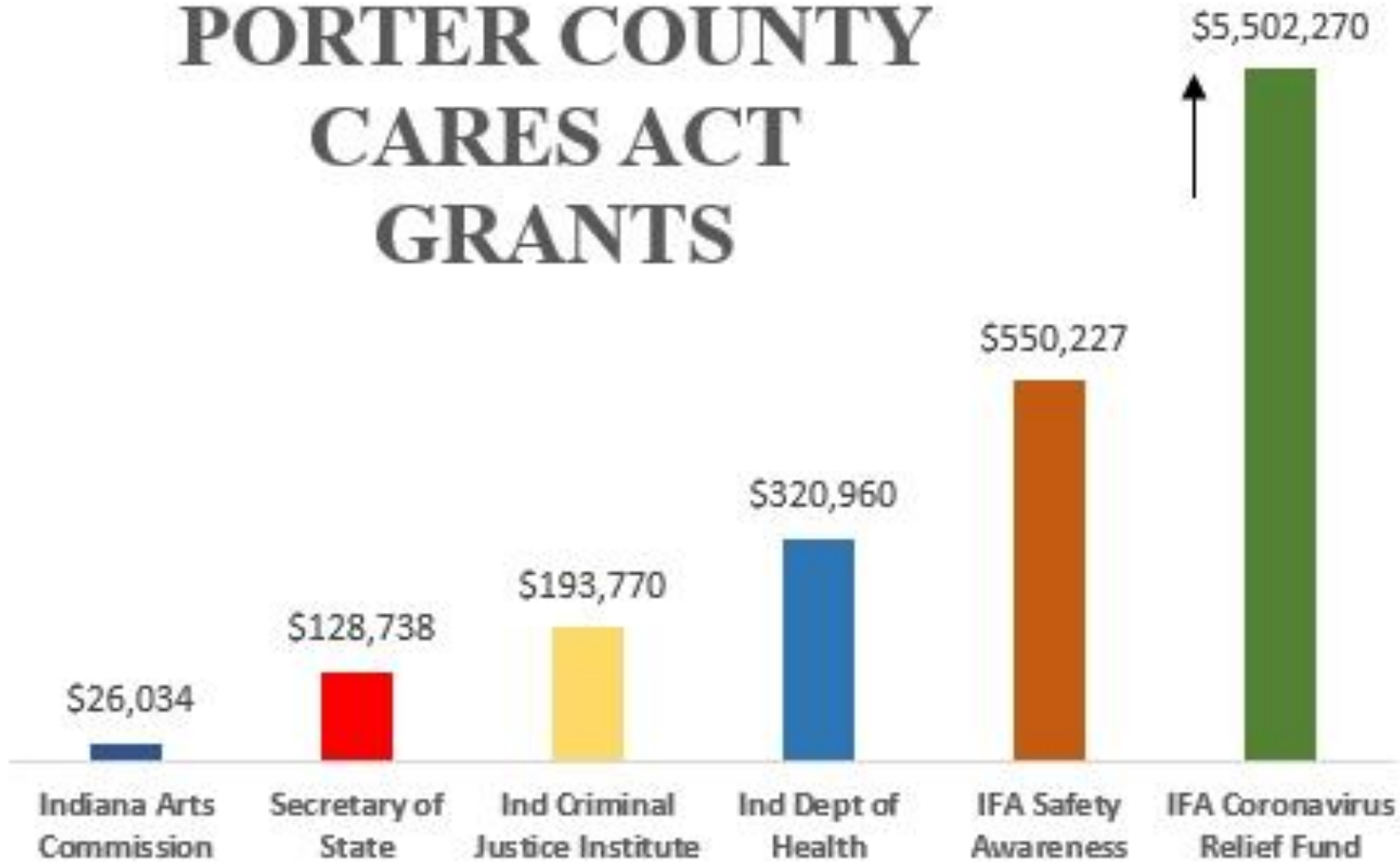


American Rescue Plan Act Fiscal Recovery Funds: Compliance and Tracking

VICKI URBANIK, CPA, EA, CGFM
PORTER COUNTY AUDITOR

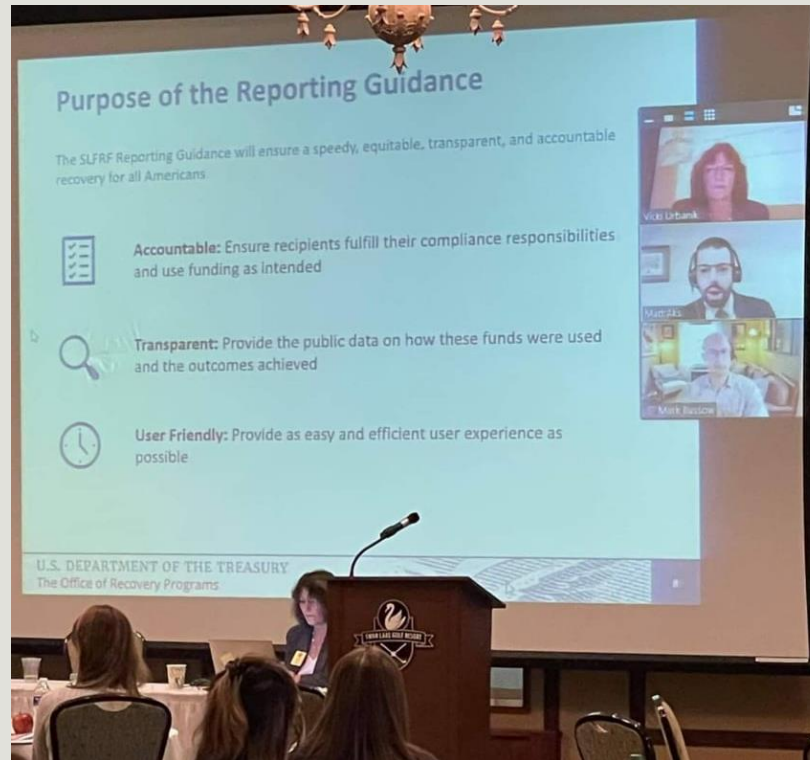
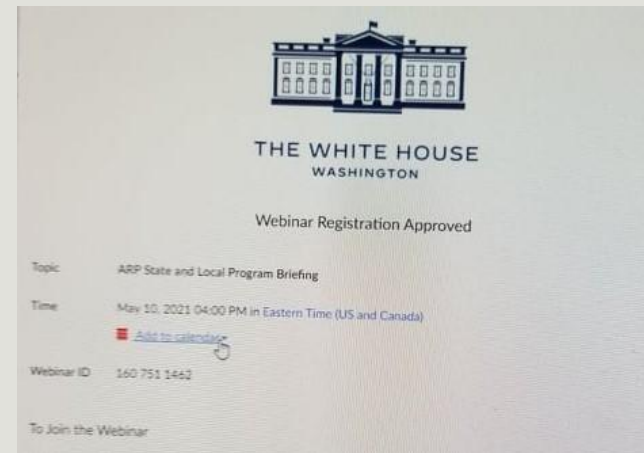
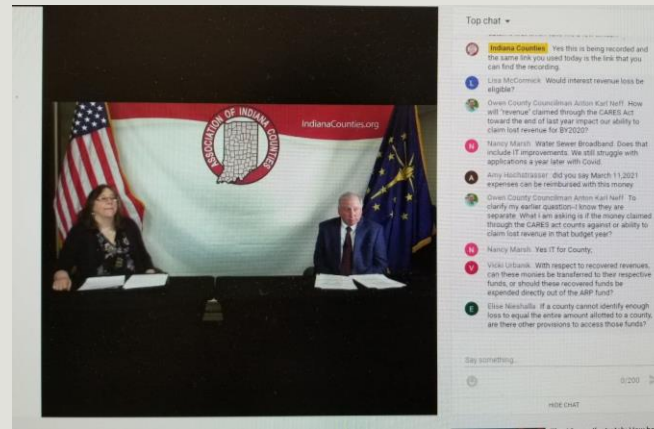
PORTER COUNTY CARES ACT GRANTS





March 11, 2021 -- President Biden signs the American Rescue Plan Act (ARPA).

ARPA Training:



Clockwise from top: AIC/SBOA webinar, March, 2021; White House briefing, May, 2021; Indiana County Auditors' North-South conference, July, 2021; County Commissioners' conference and Auditors' breakout session, Nov. 2021.



Coronavirus State & Local Fiscal Recovery Funds: Overview of the Final Rule

U.S. DEPARTMENT OF THE TREASURY

January 2022

Fiscal Recovery Funds Eligible Use Categories *(listed in order from most flexible to most specific)*

Revenue Loss

Public Health and Negative Economic Impacts

Premium Pay

**Investments in Water, Sewer,
and Broadband Infrastructure**

Porter County Government

Total FRF Allocation	\$33,096,066
Revenue Replacement	\$10,000,000
Balance	\$23,096,066

Jasper County Government

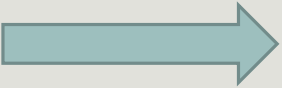
Total FRF Allocation	\$6,500,000
Revenue Replacement	\$6,500,000
Balance	\$0

PUBLIC HEALTH AND NEGATIVE ECONOMIC IMPACTS

Analysis:

- Identify a harm or need caused or exacerbated by the COVID-19 emergency. Identify those negatively impacted or disproportionately impacted.
- Develop a program, service or capital expenditure that responds to the harm or need. Responses must be related and reasonably proportional.

Expenditure Category: Public Health and Negative Impacts: Public Health

○ **COVID-19 Mitigation and Prevention** 

Programs and services include: Vaccination programs, medical care, testing, contact tracing, support for isolation or quarantine, supports for vulnerable populations to access health services, enforcement of public health orders, outreach, PPE, supports for services in living facilities, enhancement of health data systems.

○ **Behavioral Health**

○ **Medical Expenses**

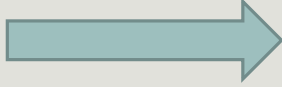
Capital expenditures include: Improvements or construction of testing and vaccine sites, labs, and medical facilities dedicated to COVID-19; acquisition of equipment including ventilators, ambulances, emergency radio systems, technology infrastructure; building adaptations to residential facilities, homeless shelters, public facilities and schools; assistance to small businesses, nonprofits, and impacted industries (example: new outdoor spaces).

○ **Responding to Violence** 

Includes: Services to reduce crime or aid victims of violence, such as emergency housing assistance, cash assistance, assistance with childcare and other needs; street outreach programs; violence intervention with wraparound services such as behavioral therapy, trauma recovery, job training, education, housing and relocation; new intervention workers.

Expenditure Category: Public Health and Negative Economic Impacts: Negative Impacts

- **Assistance to Households**
- **Assistance to Small Businesses**
- **Assistance to Nonprofits**
- **Assistance to Impacted Industries, including Tourism**



Negatively impacted households:

Unemployment, food or housing insecurity, low or moderate income.

Eligible uses include: Food assistance; housing counseling, legal aid to help in evictions, housing supports for the elderly or disabled, help with delinquent taxes; emergency assistance for pressing needs like burials and home repairs; internet access including programs to provide tablets and routers; cash assistance; survivor benefits; assistance to access SNAP, CTC, other public benefits; child care services; construction of child care centers; youth services; tutoring services; housing projects including those under the National Housing Trust Fund; housing down payments; LIHTC affordable housing loans; programs to expand access to health insurance; financial literacy programs; job training; workforce training centers.

Disproportionately impacted households:

Eligible uses include: Lead remediation projects; medical facilities designed to address health disparities; community investments that enhance quality-of-life such as parks and recreational areas; revitalization of vacant, abandoned properties.

Premium Pay

For eligible employees performing essential work during the pandemic.
Must be non-exempt and/or meet a wage threshold. Elected officials are not eligible.

Expenditure Category: Investments in Water, Sewer, and Broadband Infrastructure

○ **Water**



○ **Sewer**

○ **Broadband**



Must be “necessary:” 1) Responsive to an identified need to achieve or maintain level of service and 2) cost-effective for meeting that need.

Eligible Uses:

EPA’s CWSRF and DWSRF eligible projects, including construction of treatment works, repair/replacement of sewer treatment works; MS4 projects including green roofs, basins, porous pavements, roadside plantings; rainwater collection; water conservation projects, treatment works energy reduction; security measures at treatment facilities; projects under Water Infrastructure Improvements for the Nation (WINN) Act including CSOs, wetland/shoreline restoration, urban tree canopy; private wells and septic systems; replacement of full service lines for lead remediation in schools and child care; dams and reservoirs used for drinking water; consumer incentive programs including rebates for green infrastructure, rain barrels, conservation.

Lack of access to broadband service, lack of affordable or reliable service

Must meet/exceed 100 Mbps download/upload speeds or, if not practicable, 100/20 Mbps

View Balances by Fund

As of: 02/04/2022



Fund: 8908



Go

**Note: Balances include transactions after the last posted date of 01/01/2022.**

Fund: 8908 21.027 ARP Cov Fiscal Recovery

Fund Type: Calendar (01/01/2022 - 02/04/2022)

Normal Accounts

	02/2022 Current Month	Total
Appropriation:	0.00	0.00
Carry Forward Receipts:	0.00	16,548,033.00
Receipts:	0.00	0.00
Expenditure:	0.00	0.00
Estimated Revenue:	0.00	0.00

Grand Totals

Unreceived Revenue Balance:	0.00
Unexpended Balance:	0.00
Cash Balance:	16,548,033.00
Cash Balance Including Investments:	16,548,033.00 **

**Total includes outstanding investments from the Investment System (ending balance).

“Document, document, document.”

“Communicate, communicate,
communicate.”

**Table 2: Reporting requirements by recipient type**

Tier	Recipient	Interim Report	Project and Expenditure Report	Recovery Plan Performance Report
1	States, U.S. territories, metropolitan cities and counties with a population that exceeds 250,000 residents	By August 31, 2021 or 60 days after receiving funding if funding was received by October 15, with expenditures by category	By January 31, 2022, and then 30 days after the end of each quarter thereafter ⁹	By August 31, 2021 or 60 days after receiving funding, and annually thereafter by July 31 ¹⁰
2	Metropolitan cities and counties with a population below 250,000 residents which received more than \$10 million in SLFRF funding			Not required
3	Tribal Governments which received more than \$30 million in SLFRF funding		By April 30, 2022, and then annually thereafter ¹¹	
4	Tribal Governments which received less than \$30 million in SLFRF funding			
5	Metropolitan cities and counties with a population below 250,000 residents which received less than \$10 million in SLFRF funding			
6	NEUs	Not required		

Note: Based on the period of performance, reports will be collected through April 30, 2027. See the specific due dates listed in Sections B and C.

Tier 2 Reporting Schedule



U.S. DEPARTMENT OF THE TREASURY

For these recipients, the initial quarterly Project and Expenditure Report will cover three calendar quarters from March 3, 2021 to December 31, 2021 and must be submitted to Treasury by January 31, 2022. The subsequent quarterly reports will cover one calendar quarter and must be submitted to Treasury within 30 calendar days after the end of each calendar quarter. Quarterly reports are not due concurrently with applicable annual reports. The table below summarizes the quarterly report timelines:

Report	Year	Quarter	Period Covered	Due Date
1	2021	2 - 4	March 3 – December 31	January 31, 2022
2	2022	1	January 1 – March 31	April 30, 2022
3	2022	2	April 1 – June 30	July 31, 2022
4	2022	3	July 1 – September 30	October 31, 2022
5	2022	4	October 1 – December 31	January 31, 2023
6	2023	1	January 1 – March 31	April 30, 2023
7	2023	2	April 1 – June 30	July 31, 2023
8	2023	3	July 1 – September 30	October 31, 2023
9	2023	4	October 1 – December 31	January 31, 2024
10	2024	1	January 1 – March 31	April 30, 2024
11	2024	2	April 1 – June 30	July 31, 2024
12	2024	3	July 1 – September 30	October 31, 2024
13	2024	4	October 1 – December 31	January 31, 2025
14	2025	1	January 1 – March 31	April 30, 2025
15	2025	2	April 1 – June 30	July 31, 2025
16	2025	3	July 1 – September 30	October 31, 2025
17	2025	4	October 1 – December 31	January 31, 2026
18	2026	1	January 1 – March 31	April 30, 2026
19	2026	2	April 1 – June 30	July 31, 2026
20	2026	3	July 1 – September 30	October 31, 2026
21	2026	4	October 1 – December 31	March 31, 2027

**Appendix 1: Expenditure Categories**

The Expenditure Categories (EC) listed below must be used to categorize each project as noted in Part 2 above. The term "Expenditure Category" refers to the detailed level (e.g., 1.1 COVID-19 Vaccination). When referred to as a category (e.g., EC 1) it includes all Expenditure Categories within that level.

1: Public Health
1.1 COVID-19 Vaccination [^]
1.2 COVID-19 Testing [^]
1.3 COVID-19 Contact Tracing
1.4 Prevention in Congregate Settings (Nursing Homes, Prisons/Jails, Dense Work Sites, Schools, etc.) [^]
1.5 Personal Protective Equipment
1.6 Medical Expenses (including Alternative Care Facilities)
1.7 Capital Investments or Physical Plant Changes to Public Facilities that respond to the COVID-19 public health emergency
1.8 Other COVID-19 Public Health Expenses (including Communications, Enforcement, Isolation/Quarantine)
1.9 Payroll Costs for Public Health, Safety, and Other Public Sector Staff Responding to COVID-19
1.10 Mental Health Services [^]
1.11 Substance Use Services [^]
1.12 Other Public Health Services
2: Negative Economic Impacts
2.1 Household Assistance: Food Programs [^]
2.2 Household Assistance: Rent, Mortgage, and Utility Aid [^]
2.3 Household Assistance: Cash Transfers [^]
2.4 Household Assistance: Internet Access Programs [^]
2.5 Household Assistance: Eviction Prevention [^]
2.6 Unemployment Benefits or Cash Assistance to Unemployed Workers [^]
2.7 Job Training Assistance (e.g., Sectoral job-training, Subsidized Employment, Employment Supports or Incentives) [^]
2.8 Contributions to UI Trust Funds
2.9 Small Business Economic Assistance (General) [^]
2.10 Aid to Nonprofit Organizations [^]
2.11 Aid to Tourism, Travel, or Hospitality
2.12 Aid to Other Impacted Industries
2.13 Other Economic Support [^]
2.14 Rehiring Public Sector Staff
3: Services to Disproportionately Impacted Communities
3.1 Education Assistance: Early Learning [^]
3.2 Education Assistance: Aid to High-Poverty Districts [^]
3.3 Education Assistance: Academic Services [^]
3.4 Education Assistance: Social, Emotional, and Mental Health Services [^]
3.5 Education Assistance: Other [^]
3.6 Healthy Childhood Environments: Child Care [^]
3.7 Healthy Childhood Environments: Home Visiting [^]
3.8 Healthy Childhood Environments: Services to Foster Youth or Families Involved in Child Welfare System [^]



3.9 Healthy Childhood Environments: Other [^]
3.10 Housing Support: Affordable Housing [^]
3.11 Housing Support: Services for Unhoused Persons [^]
3.12 Housing Support: Other Housing Assistance [^]
3.13 Social Determinants of Health: Other [^]
3.14 Social Determinants of Health: Community Health Workers or Benefits Navigators [^]
3.15 Social Determinants of Health: Lead Remediation [^]
3.16 Social Determinants of Health: Community Violence Interventions [^]
4: Premium Pay
4.1 Public Sector Employees
4.2 Private Sector: Grants to Other Employers
5: Infrastructure²⁴
5.1 Clean Water: Centralized Wastewater Treatment
5.2 Clean Water: Centralized Wastewater Collection and Conveyance
5.3 Clean Water: Decentralized Wastewater
5.4 Clean Water: Combined Sewer Overflows
5.5 Clean Water: Other Sewer Infrastructure
5.6 Clean Water: Stormwater
5.7 Clean Water: Energy Conservation
5.8 Clean Water: Water Conservation
5.9 Clean Water: Nonpoint Source
5.10 Drinking water: Treatment
5.11 Drinking water: Transmission & Distribution
5.12 Drinking water: Transmission & Distribution: Lead Remediation
5.13 Drinking water: Source
5.14 Drinking water: Storage
5.15 Drinking water: Other water infrastructure
5.16 Broadband: "Last Mile" projects
5.17 Broadband: Other projects
6: Revenue Replacement
6.1 Provision of Government Services
7: Administrative
7.1 Administrative Expenses
7.2 Evaluation and Data Analysis
7.3 Transfers to Other Units of Government
7.4 Transfers to Non-entitlement Units (States and territories only)

[^]Denotes areas where recipients must identify the amount of the total funds that are allocated to evidence-based interventions (see Use of Evidence section above for details)

[^]Denotes areas where recipients must report on whether projects are primarily serving disadvantaged communities (see Project Demographic Distribution section above for details)

²⁴ Definitions for water and sewer Expenditure Categories can be found in the EPA's handbooks. For "clean water" expenditure category definitions, please see: <https://www.epa.gov/sites/production/files/2018-03/documents/cwdefinitions.pdf>. For "drinking water" expenditure category definitions, please see: <https://www.epa.gov/tswrf/drinking-water-state-revolving-fund-national-information-management-system-reports>.

The Porter County Auditor's Office webpage (porterco.org/auditor) will provide updates on the county government's use of Fiscal Recovery Funds. The page currently includes:

- ARPA Resources
- Porter County ARPA Timeline
- Tracking Porter County's ARPA Spending

Thank you for attending!